

# Edit your personal besthealthquote.net website

View some examples first:

[www.besthealthquote.net/rothrobertson](http://www.besthealthquote.net/rothrobertson)

[www.besthealthquote.net/lm](http://www.besthealthquote.net/lm)

[www.besthealthquote.net/tntinsurance](http://www.besthealthquote.net/tntinsurance)

---

More Steps at the bottom of the document

Simple Steps: (More In Depth Steps Below)

1. Login to your besthealthquote.net site
  - If you don't have the info email me [ttropoloc@nia.biz](mailto:ttropoloc@nia.biz)
2. Make sure your information is correct. And your agent # is the correct number at the end of the url's that are associated with your carriers
3. Scroll to the bottom to view the editing table.
4. To upload an image click the image button
5. Click browse server
6. At the bottom select browse. Find the image you want to upload and select it. click open. Then click upload.
7. Click browse server and select the image that you have uploaded.
8. Click Ok.
9. You can resize your image and select where you want it centered by clicking on it once. And selecting the center, left align, or right align, similar to what's found in Microsoft word. Then you can edit your text. When you're done click submit.
10. Then click the link and view what your page looks like. You can edit it as many times as you want to get a perfect look for your page.
11. Need more help? Contact me by e-mail [ttropoloc@nia.biz](mailto:ttropoloc@nia.biz) or over the phone at 888-243-5026 ext. 108

Extra Steps:

12. Login to your besthealthquote.net site

- If you don't have the info email me [ttropoloc@nia.biz](mailto:ttropoloc@nia.biz)

The screenshot shows a web interface for the National Insurance Agency. At the top, there is a blue header bar with the text "National Insurance Agency". Below this is a dark blue section titled "Agent Administration". Inside this section is a white box titled "Modify Website". The text inside the box reads: "Your website can be modified at any time. Simply enter your username and password in the fields below. (Your username is your last name. eg. Smith)". There are two input fields: "Username:" with the value "troytropoloc" and "Password:" with a masked password of ten dots. A "Submit" button is located below the password field. At the bottom of the white box, there is a link that says "Forgot Your Password? Click Here". The entire form is set against a dark blue background with light blue horizontal bars at the top and bottom.

13. Make sure your information is correct. And your agent # is the correct number at the end of the url's that are associated with your carriers

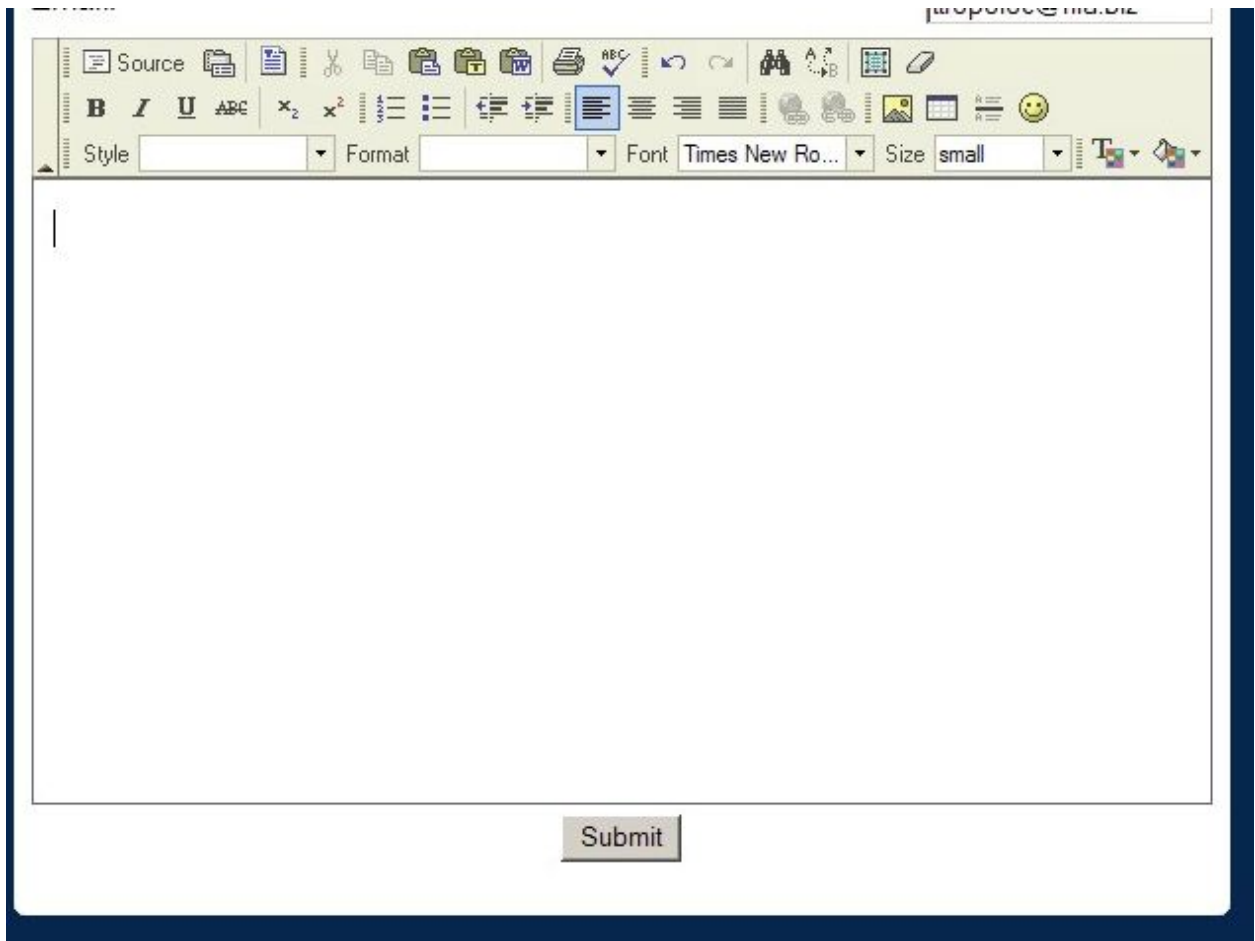
**Agent Administration**

**Modify Website**

Please update the following information:

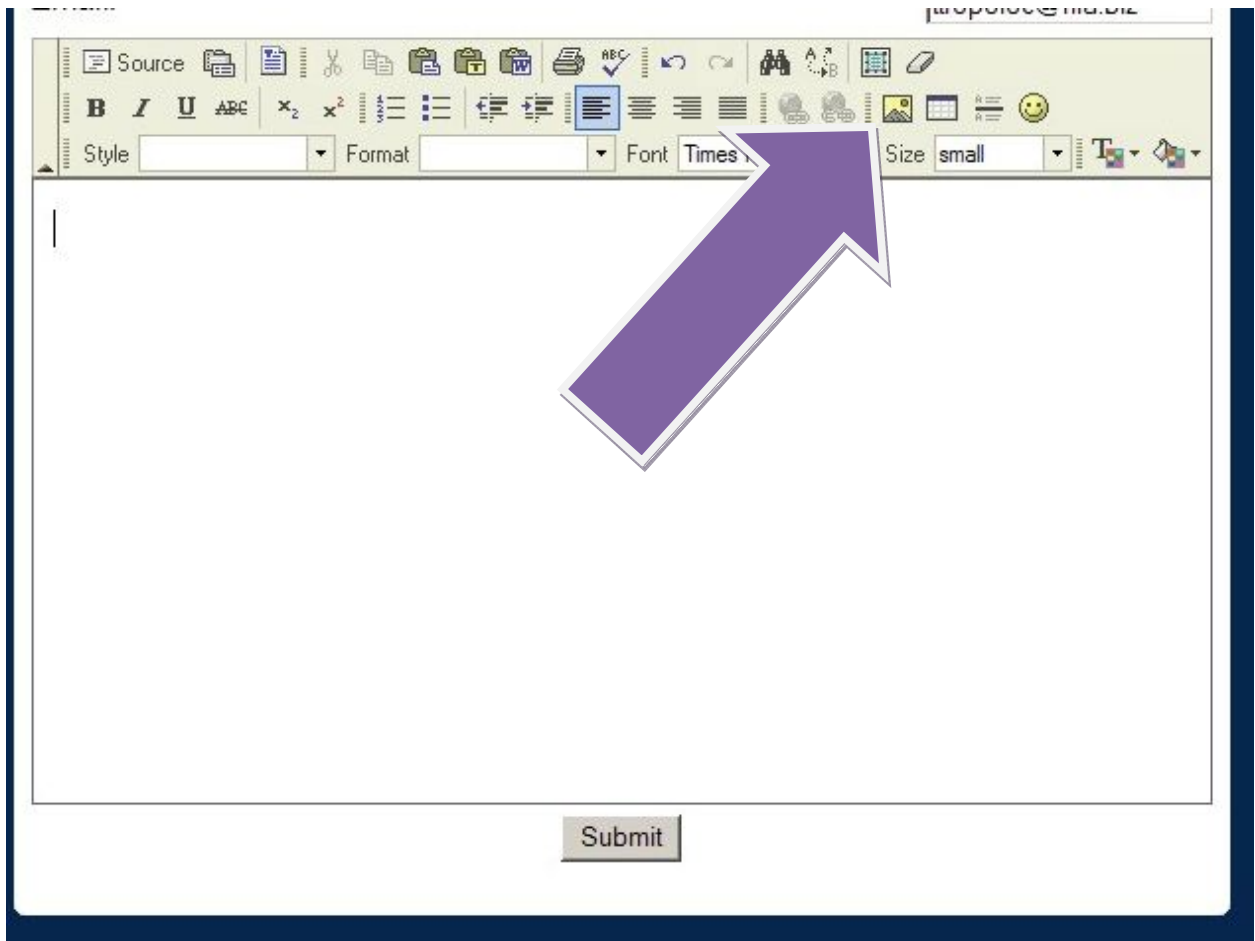
Company Name:	<input type="text" value="TNT INSURANCE"/>
Display Assurant Health Major Medical Link:	<input type="checkbox"/>
Assurant Health Major Medical:	<input type="text" value="https://consumer.eassur"/>
Display short Term Major Medical Link:	<input type="checkbox"/>
Short Term Major Medical Link:	<input type="text" value="https://www.etdbw.com/f"/>
Display IVO Link:	<input type="checkbox"/>
IVO:	<input type="text" value="http://ivirtualoffice.biz"/>
Display GR Link:	<input type="checkbox"/>
GR:	<input type="text" value="https://www.goldenruleh"/>
Display GTL Link:	<input type="checkbox"/>
GTL:	<input type="text" value="http://gtllifeinsurance.co"/>
Display Dental Link:	<input type="checkbox"/>
Dental:	<input type="text" value="https://www.hpainsuranc"/>
Display RX Link:	<input type="checkbox"/>
RX:	<input type="text" value="http://206.135.51.247/Ind"/>
Display IAC Link:	<input type="checkbox"/>
IAC:	<input type="text" value="https://php.iacusa.com/f"/>
Display NBP Link:	<input type="checkbox"/>
First Name:	<input type="text" value="Torys"/>
Last Name:	<input type="text" value="Tropoloc"/>
The text you enter into this field will become your website location. You cannot enter a space in the name, it must be all ONE word such as "mycompany". Your website location will become http://www.besthealthquote.net/WHAT_YOU_TYPE_HERE :	
Address 1:	<input type="text" value="tntinsurance"/>
Address 2:	<input type="text" value="14800 quorum Drive Ste"/>
City:	<input type="text" value="Dallas"/>

14.Scroll to the bottom to view the editing table.

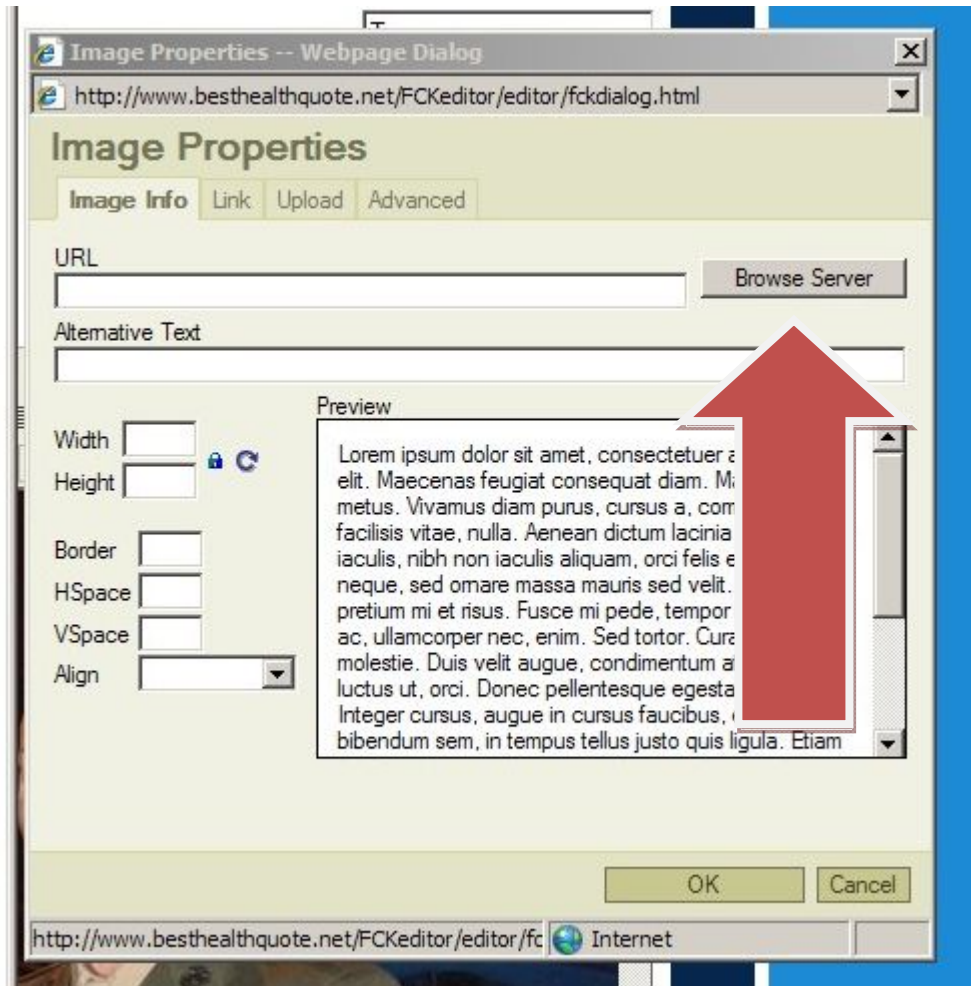


The image shows a screenshot of a rich text editor interface. At the top, there is a toolbar with various icons for editing, including Source, Undo, Redo, Bold, Italic, Underline, ABC, subscript, superscript, bulleted list, numbered list, indent, outdent, link, unlink, image, table, and smiley. Below the toolbar is a text area with a vertical cursor on the left side. At the bottom center of the editor, there is a "Submit" button.

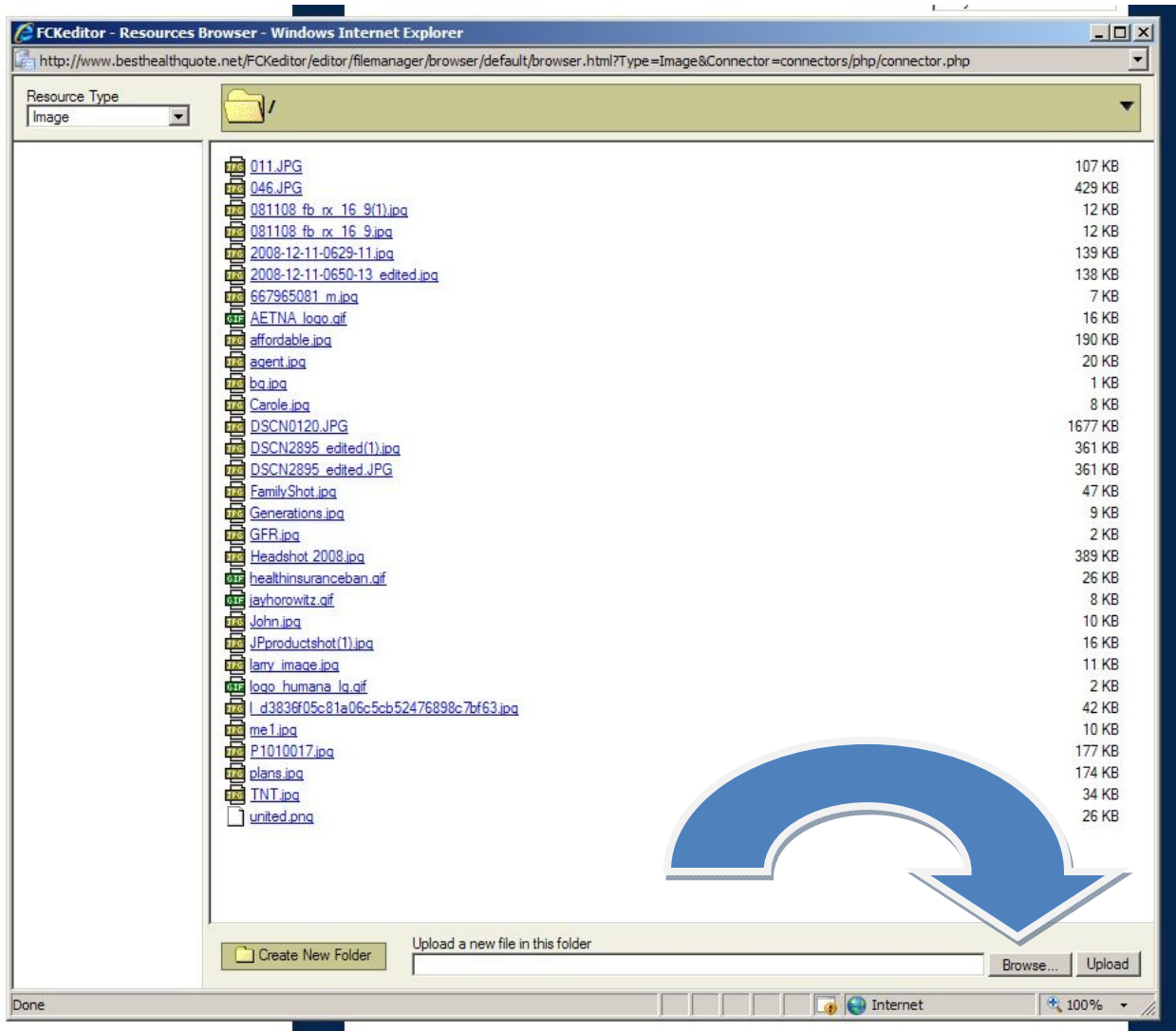
15.To upload an image click the image button



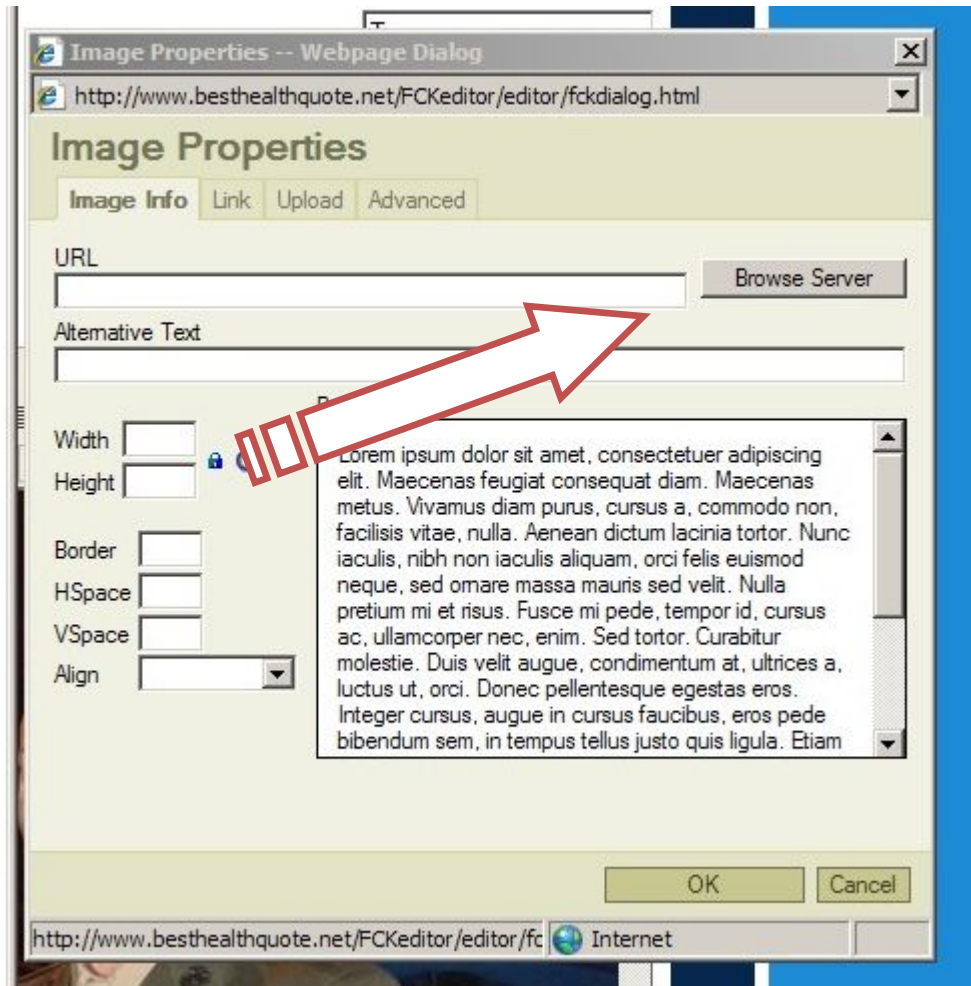
## 16. Click browse server



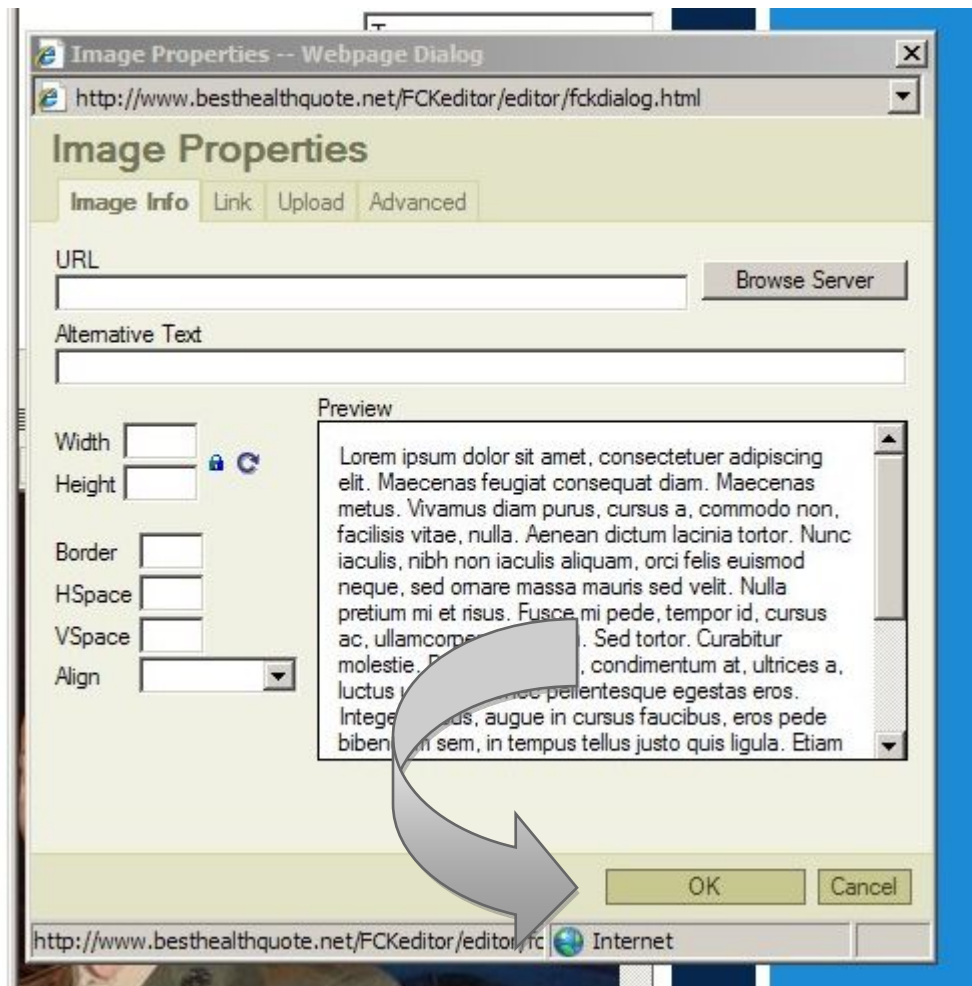
17. At the bottom select browse. Find the image you want to upload and select it. click open. Then click upload.



18. Click browse server and select the image that you have uploaded.



19. Click Ok.



20. You can resize your image and select where you want it centered by clicking on it once. And selecting the center, left align, or right align, similar to what's found in Microsoft Word. Then you can edit your text. When you're done click submit.

21. Then click the link and view what your page looks like. You can edit it as many times as you want to get a perfect look for your page.

22. Need more help? Contact me by e-mail [ttropoloc@nia.biz](mailto:ttropoloc@nia.biz) or over the phone at 888-243-5026 ext. 108